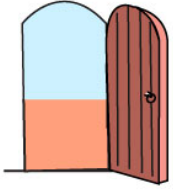
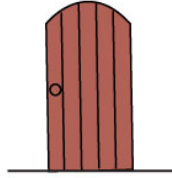


Opposites Fill In

Fill in the blanks with the correct opposites:



The door is _____.



The door is _____.



The light is _____.



The light is _____.



The boy is _____.



The boy is _____.



The child is _____.



The child is _____.



The fairy is _____.



The witch is _____.



The bear sits on the _____.



The bunny sits on the _____.



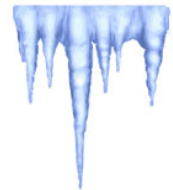
The ball is _____ the box.



The ball is _____ the box.



The fire is _____.



The ice is _____.



The ocean is _____.



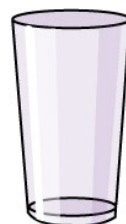
The brook is _____.



The honey is _____.



The lemon is _____.



The glass is _____.



The glass is _____.

asleep / awake
shallow / deep
left / right
sweet / sour
on / off
hot / cold

good / evil
empty / full
in / out of
open / closed
sick / healthy